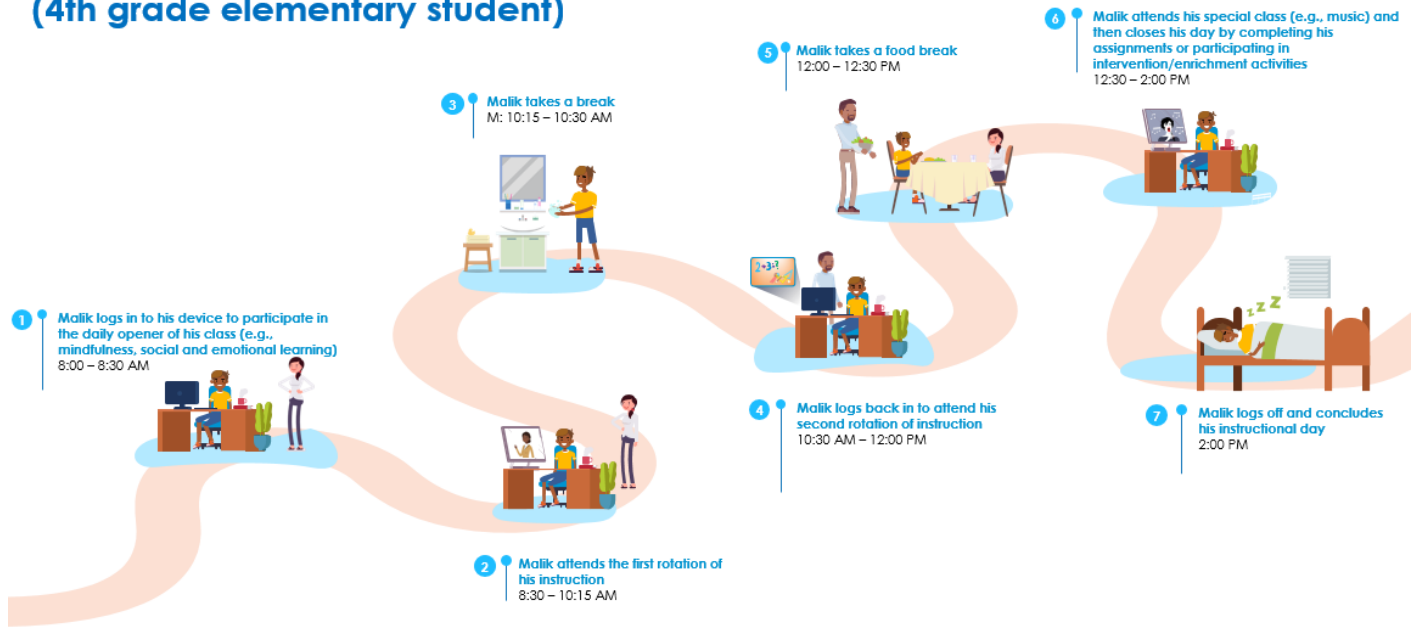


## Example only: Day in the life of Malik's eLearning day. (4th grade elementary student)



## Example Only: Day in the life of Malik's eLearning day. (4<sup>th</sup> grade elementary student)

1. Malik logs in to his device to participate in the daily opener of his class (e.g., mindfulness, social and emotional learning) 8:00 – 8:30 AM
2. Malik attends the first rotation of his instruction - 8:30- 10:15 AM
3. Malik takes a break M: 10:15-10:30 AM
4. Malik logs back in to attend his second rotation of instruction - 10:30AM – 12 PM
5. Malik takes a food break – 12:00 – 12:30 PM
6. Malik attends his special class (e.g., music) and then closes his day by completing assignments or participating in intervention/enrichment activities – 12:30 – 2:00 PM
7. Malik logs off and concludes his instructional day – 2:00 PM